

# STATEMENT OF ENVIRONMENTAL EFFECTS

SOMA MUSIC & ARTS FESTIVAL 2025

The logo for Soma Music & Arts, featuring the word "Soma" in a blue, stylized serif font. The 'S' is large and bold, while the 'oma' is in a more fluid, cursive-like script.

*Applicant: Soma Music & Arts Pty Ltd (ABN: 42 661 988 389)*

*Prepared for: Snowy Valleys Council*

APRIL 2025

## DOCUMENT CONTROL

Revision	Date	Description/Notes	Prepared By
Version 1	7 Apr 2025	Original document - DA submission	Tim Schmid Ben Scheffers

## REFERENCES

The following references have been used to develop this plan, and as such this plan must be read and applied in accordance with them.

Reference	Reference Description
Soma (2025a)	Soma Music & Arts Festival 2025 - Site Plan <i>version 2</i>
Soma (2025b)	Soma Music & Arts Festival 2025 - Consent of Landowner
Soma (2025c)	Soma Music & Arts Festival 2025 - Acoustic Report <i>version 1</i>
Soma (2025d)	Soma Music & Arts Festival 2025 - Bushfire Management Plan <i>version 1</i>
TumutLEP (2012)	<a href="#">Tumut Local Environmental Plan 2012 version 10/11/23</a>
NSWSpatial (2020)	<a href="#">NSW Spatial Services - NSW Land Parcel and Property Theme - Lot updated 31/10/24</a>
NSWDPHI (2018a)	<a href="#">NSW Department of Planning Housing and Infrastructure - Environmental Planning Instrument - Riparian Lands Watercourses edition 1</a>
NSWDPHI (2018b)	<a href="#">NSW Department of Planning, Housing and Infrastructure - Environmental Planning Instrument - Flood edition 22/05/2019</a>
NSWDPHI (2018c)	<a href="#">NSW Department of Planning, Housing and Infrastructure - Environmental Planning Instrument - Terrestrial Biodiversity edition 22/05/2019</a>
NSWDPHI (2018d)	<a href="#">NSW Department of Planning, Housing and Infrastructure - Environmental Planning Instrument - Landslide Risk edition 1</a>
NSWRFS (2025)	<a href="#">NSW RFS - NSW Bush Fire Prone Land - updated 10/01/25</a>
NSWRFS (2019)	<a href="#">Planning for Bushfire Protection - A guide for councils, planners, fire authorities and developers - Nov 2019</a>
NSWSEPP (2008)	<a href="#">State Environmental Planning Policy (Exempt and Complying Development Codes) 2008 version 28/02/25</a>



## **ABBREVIATIONS**

- BMP - Bushfire Management Plan
- DA - Development Application
- LEP - Local Environmental Plan
- Soma - Soma Music & Arts Festival 2025
- SEE - Statement of Environmental Effects

## CONTENTS

<b>DOCUMENT CONTROL.....</b>	<b>2</b>
<b>REFERENCES.....</b>	<b>2</b>
<b>ABBREVIATIONS.....</b>	<b>3</b>
<b>CONTENTS.....</b>	<b>4</b>
<b>1. DEVELOPMENT PROPOSAL.....</b>	<b>5</b>
1.1 Operational Hours.....	6
1.2 Materials, Machinery and Vehicles.....	7
<b>2. SITE AND SURROUNDING AREA.....</b>	<b>8</b>
2.1 Site Analysis.....	8
2.2 Land Ownership and Applicant.....	9
2.3 Existing Features of the Land.....	10
2.4 Surrounding Area & Heritage.....	10
2.5 Zone Provisions for RU1 Primary Production.....	11
2.6 Temporary Use of Land.....	12
<b>3. ENVIRONMENTAL IMPACTS.....</b>	<b>13</b>
3.1 Traffic Management.....	13
3.2.1 Water.....	14
3.2.2 Electricity.....	14
3.2.3 Bathroom Facilities & Effluence.....	14
3.3 Pollution.....	15
3.3.1 Noise pollution.....	15
3.3.2 Greenhouse Gas (GHG) emissions.....	15
3.3.3 Light pollution.....	16
3.4 Natural Environment.....	17
3.4.1 Riparian Land and Watercourses.....	17
3.4.2 Excavation and Fill.....	18
3.4.3 Flood Planning.....	18
3.4.4 Bushfire Planning.....	19
3.4.5 Terrestrial biodiversity.....	20
3.4.6 Landslide Risk.....	21
3.5 Construction Issues.....	21
3.6 Waste Management Plan.....	22
3.6.1 Waste Management Infrastructure and System.....	23
3.6.2 Waste Minimisation Strategies.....	24
<b>4. CONCLUSION.....</b>	<b>25</b>

## 1. DEVELOPMENT PROPOSAL

This SEE has been developed as compliance for a DA seeking council approval for temporary use of land located at 3892 Snowy Mountains Highway, Mount Adrah, NSW 2729.

This temporary use is in connection with Soma, a three-day event, focused on musical discovery, connection, and artistic expression. Usage of the land would extend for a period of two weeks between October 31st and 13th November 2025. The accompanying DA seeks consent over this period.

Soma will have up to 1100 people including patrons, staff, volunteers and performers attend throughout the weekend.

Soma will create a space for connection under the sky, celebrating a shared love for art, community and our beautiful Australian landscape. The event will bring together artists and audiences from across NSW, Victoria and the ACT to share a moment of connection and discovery of new places, people and ideas. Soma is particularly focused on creating a community-based, safe and sustainable environment. Further to this, Soma will bring people into the Snowy Valleys region, providing economic activity and support to local towns.

The event is to include the following features:

- An entertainment stage showcasing live music, DJ's and lighting
- A food precinct consisting of multiple food stalls and a dining area. There will be no sale of alcohol
- A relaxation zone in which patrons can enjoy comfortable seating and background music away from the main entertainment
- Camping and parking areas

All patrons at Soma will camp in designated areas which are separated from parking. Refer to the Soma Site Plan (*Soma 2025a*) for visualisations of these areas.

## 1.1 Operational Hours

Between Friday 31st October and Monday November 3rd there will be minimal staff onsite to intermittently conduct site evaluation and planning. The event build will commence in the period after this until Thursday November 6th . During this time staff and contractors will establish the site and erect temporary event infrastructure. At the completion of the event, it would approximately take four days to remove all infrastructure and return the site to its previous condition.

[Table 1-1](#) provides a detailed timeline of the different stages of the event.

The event will be open to the public on Friday November 7th with the first patrons arriving from 12pm. All patrons will have left the event grounds by 5pm on Monday November 10th [Table 1-2](#) provides a more detailed timeline on the specific hours of operation during the event. The site will be accessible 24 hours for staff and emergency services.

*Table 1-1 Soma 2025 phased schedule*

Phased Schedule			
Phase	Work Type	People Onsite	Date Commence
Stage 1 Bump In	Site Preparation	6 staff, 0 patrons	9am Fri 31/10/25
Stage 2 Bump In	Event Build	30-35 staff, 0 patrons	9am Mon 03/11/25
Event Opening Time	Gates Open to Public	Up to 1100 staff, performers and patrons	12pm Fri 07/11/25
Event Closing Time	Entertainment Finishes	N/A	1am Mon 10/11/25
Event Clear of Public	Public offsite	N/A	5pm Mon 10/11/25
Stage 1 Bump Out	Event Packdown	20 staff, 0 patrons	11am Mon 10/11/25
Stage 2 Bump Out	Final Clean/offsite	6 staff, 0 patrons	1pm Thu 13/11/25

Table 1-2 Soma 2025 schedule when the event is operational and open to the public.

In-Event Schedule				
Area	Fri 07/11	Sat 08/11	Sun 09/11	Mon 10/11
Ticketing Gate	12pm – 2am	8am – 8pm	Not operational	Not operational
Stage	4pm – 4am	11am – 5am	11am – 1am	Closed to public
Medical	TBC	TBC	TBC	TBC
Event Operations Centre	12pm - 12am	All hours	All hours	12am - 12pm
Info Tent	4pm - 4am	8am – 5am	8am – 1am	8am - 12pm
Vendors	12pm - 2am	7am - 2am	7am - 12am	7am - 12pm

## 1.2 Materials, Machinery and Vehicles

Setting up and packing down the temporary event will require the use of a variety of machinery, materials and vehicles. Everything will be removed upon cessation of the event. These will be provided by local suppliers and the venue owner and include but are not limited to:

### Vehicles:

- Ute used for transportation
- Flatbed truck used for transportation
- 2 x Pantech trucks for transportation
- Potential machinery to assist with site build (Telehandler / Boomlifts)

### Site Materials and Infrastructure:

- Lighting Tower
- 60kva generator for power to the entertainment and camping areas
- 30 - 40kva generator for power to food precinct
- Portable bathroom facilities
- Temporary 1.8m fencing used to isolate certain areas such as backstage, generators and any area to be separated from patrons

- Posts and rope used for setting up temporary pathways and boundaries
- Production equipment - lighting and audio

### Temporary Structures

- 10 x 10m stretch tent for the relaxation area near food stalls
- 10 x 7.5m stretch tent for relaxation area near entertainment precinct
- Custom built temporary stage
- Peg and pole marquees of various sizes for event operations
- Portable demountable office

## 2. SITE AND SURROUNDING AREA

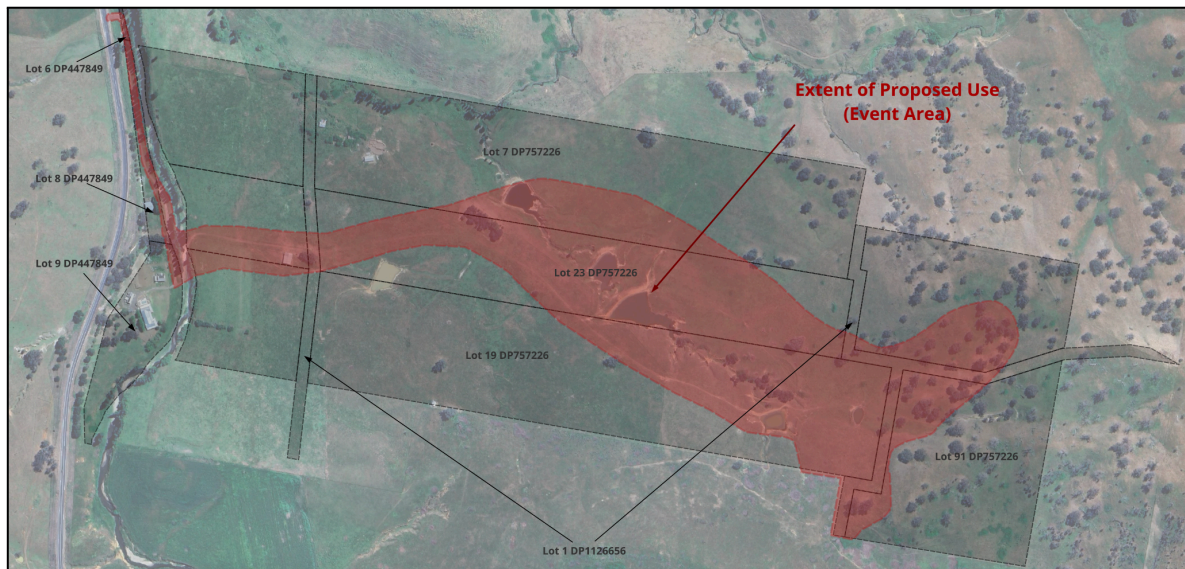
### 2.1 Site Analysis

The land to which this application relates to is the following listed lots, as shown in [Figure 2-1](#).

- Lot 1 DP1126656
- Lot 8 DP447849
- Lot 9 DP447849
- Lot 7 DP757226
- Lot 19 DP757226
- Lot 23 DP757226
- Lot 91 DP757226

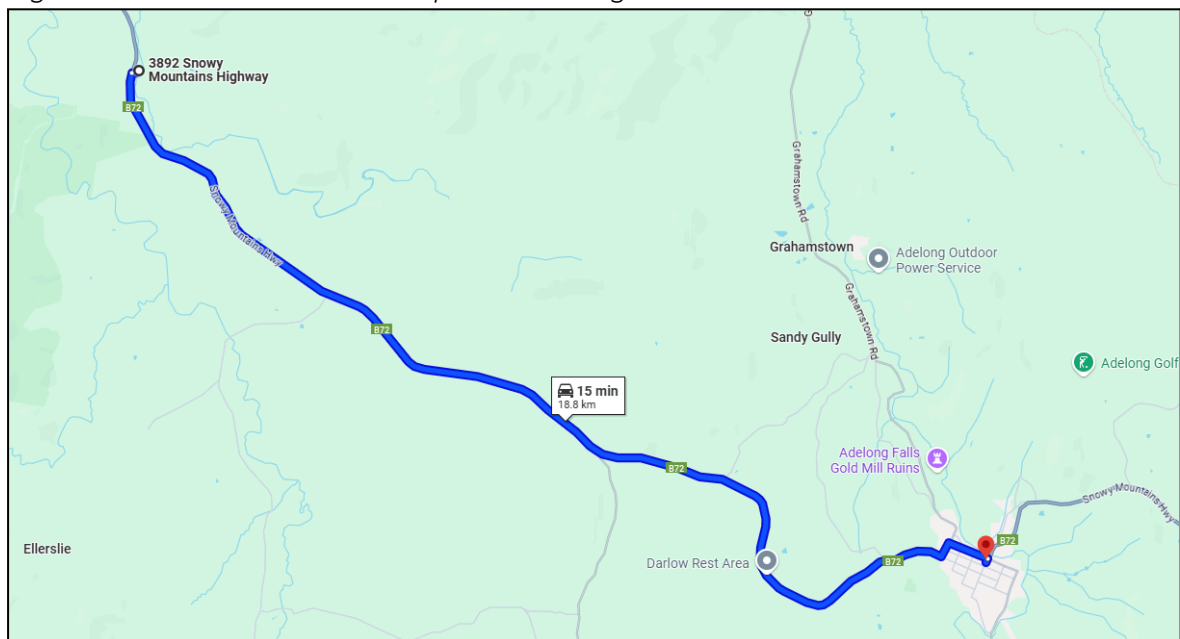
These lots are located within 3892 Snowy Mountains Highway, Mount Adrah, NSW 2729. The event site will only utilise a portion of the aforementioned lots covering no more than 28 out of the total 102 hectares.

Figure 2-1 Subject Land (NSWSpatial 2020)



The site is approximately 18.8km from the nearest town, Adelong, which has a population of 950 persons. [Figure 2-2](#) shows this.

Figure 2-2 Location of land with respect to Adelong



## 2.2 Land Ownership and Applicant

The registered proprietors of the land are a local couple who use the aforementioned lots for agricultural activity such as cattle grazing. The applicant of the development approval is Soma Music & Arts Pty Ltd, an events company that was created for the running of this event. This will be the first DA that the

company has applied with relation to this land. The registered proprietors have given permission to Soma to use the land (*Soma 2025b*).

### 2.3 Existing Features of the Land

The proposed land where the event is to take place contains minimal agricultural infrastructure and does not contain any existing dwellings. Existing infrastructure will not be used during the event. Access to the event site is via Snowy Mountains Highway which is a sealed road suitable for large vehicles.

The event will take place in cleared paddocks with sparse vegetation and clusters of trees. Dead branches will be removed prior to the event to minimise risk of branch falls. No vegetation will be removed or destroyed from the existing land.

All utilities including water, electricity, and bathroom facilities will be temporarily installed for the event and removed after the conclusion of the event. Refer to [Section 3.2](#) of this document for further details.

### 2.4 Surrounding Area & Heritage

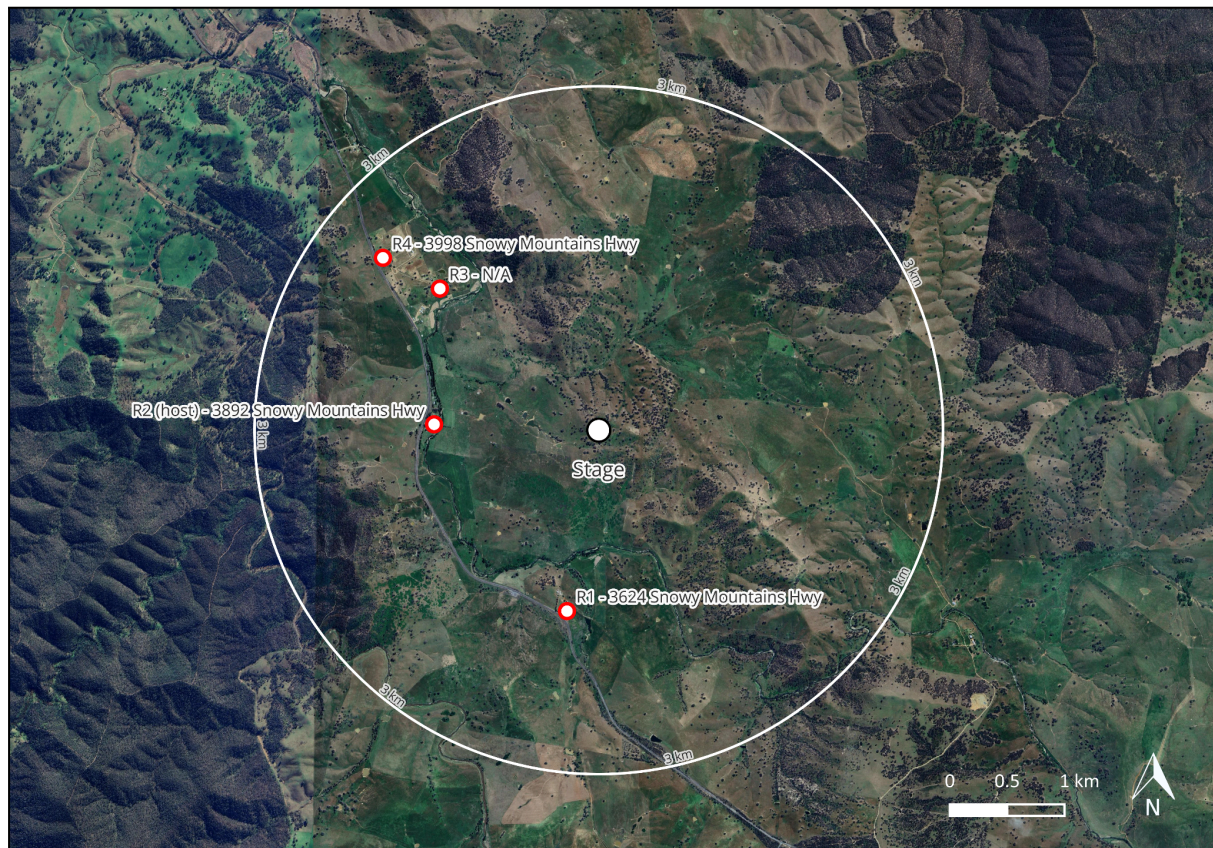
The proposed site is situated on agricultural land. Surrounding properties in the area are also used for agricultural purposes. [Figure 2-3](#) shows neighbouring properties and their distance from the proposed site.

A variety of noise management controls will be adapted to minimise noise pollution and disturbance to the surrounding community. Refer to the *Soma Acoustic Report (Soma 2025c)* for further details.

There are no heritage items located within 3km of the proposed site.



Figure 2-3 Location of neighbours with respect to proposed stage



## 2.5 Zone Provisions for RU1 Primary Production

The proposed event area is a RU1 Primary Production zone, in which temporary use of land for an event is able to be permitted as long as it does not interfere with future land use, be detrimental to adjoining zones, or harm the environment.

The proposed event would comply with these criteria by ensuring the land remains suitable for agricultural use, avoiding disturbances to the local community, and protecting the surrounding environment, including soil, water, and wildlife.

As outlined in [Section 2.6](#) and [Section 3](#) of this document, the event has been planned to mitigate any potential negative impacts, making it consistent with the zoning requirements.

## 2.6 Temporary Use of Land

The proposed event is scheduled to take place over a two-week period, which aligns with the definition of a temporary use under the relevant planning provisions. As detailed in the following clauses, we confirm that the event will fully comply with the conditions set forth for temporary land use, under the LEP (*TumutLEP 2012, clause 2.8*), ensuring minimal impact on the land and surrounding areas. Specifically:

- The temporary use will not hinder or delay future development on the land, in accordance with the applicable planning provisions and environmental planning instruments. The proposed event has been carefully planned to ensure that it does not interfere with any future intended land uses or developments, whether for agricultural, residential, or commercial purposes. All activities associated with the event will be temporary in nature and will not permanently alter the land's characteristics or suitability for future development
- The event will not cause any adverse impacts on surrounding properties or the overall amenity of the neighborhood. Potential issues such as noise, traffic congestion, or other disruptions will be proactively managed through detailed mitigation measures. These measures, which are outlined in the additional documents to be provided, will include strategies to minimise disturbances, such as noise control plans and traffic management.
- The location of the proposed event area and all associated uses and structures, including stages, tents, and parking areas, has been carefully selected to minimise any negative effects on the land's environmental attributes. The event site has been chosen to avoid disruption to natural habitats, watercourses, or other sensitive areas. Furthermore, the event will not increase the risk of natural hazards, such as flooding, erosion, or soil degradation, in the area. As outlined in [Section 3](#) of this document, appropriate assessments and measures will be taken to ensure that the event does not compromise the land's environmental integrity or pose additional risks to the surrounding area.

- Upon completion of the event, the land will be restored to its original condition, with all temporary structures, installations, and equipment removed. Any areas affected by event activities, such as foot traffic or vehicular movement will be rehabilitated. All waste materials will be cleaned up, ensuring the site is left in a sustainable and environmentally sound condition, ready for future use.

### 3. ENVIRONMENTAL IMPACTS

#### 3.1 Traffic Management

During the setup and pack-down of the event, only a minimal number of vehicles will enter and exit the site, limited to staff and contractors. Several suppliers will deliver and pick up materials using vans and small trucks during this period. As the event is held on private property, there are no legal concerns regarding access.

Up to 400 vehicles are expected to enter and park at the event site throughout its duration. If the number of vehicles exceeds this estimate, a designated overflow parking area will be used.

A variety of measures will be implemented to manage and control traffic, maximising safety while minimising the impact on the local community and environment. These measures are outlined below:

- A team of staff will manage traffic within the property, focusing on key areas such as ticket processing, queuing, car parking, and bus stops.
- The processing, queuing, and admission of vehicles will take place on private land, ensuring that traffic congestion does not occur on public roads.
- The speed limit on the event site will be signposted at 5 km/h on all internal roads to ensure the safety of patrons and staff.
- A bus service will be available to transport patrons to and from the event, reducing the number of cars onsite and significantly lowering the environmental impact.

- Car parks will be located on land that is not prone to flooding. In the event of rain, this will help prevent bogging and minimize damage to the underlying land.
- A variety of temporary signs will be erected to guide patrons and assist with traffic flow.

### 3.2 Utility & Essential Services

The proposed event is supported by satisfactory arrangements for all essential services to support the patrons, staff and contractors in compliance with the LEP (*TumutLEP 2012, clause 6.11*). The following subsections outline the measures that are to be taken.

Refer to the Soma Site Plan (*Soma 2025a*) for details on the proposed locations of utilities and essential services.

#### 3.2.1 Water

There will be free potable drinking water stations located throughout the event, including both the event area and the camping area. This water will be supplied by a vendor and stored in sanitary water tanks distributed across the site.

#### 3.2.2 Electricity

Power will be distributed across the site using off-grid diesel generators. These generators will be placed in self-contained areas, away from patrons, with fire extinguishers installed nearby to mitigate fire risks.

The installation and maintenance of power will be managed by a certified electrician. All electrical equipment will be tested and maintained in accordance with industry standards.

#### 3.2.3 Bathroom Facilities & Effluence.

Bathroom facilities will be available between the entertainment areas and designated camping areas in the form of portable restrooms supplied by an external contractor. These facilities will be strategically located to ensure easy

access from anywhere onsite. Effluent will be captured, transported offsite, and disposed of appropriately.

It is anticipated that a single toilet unit will be provided for every 55 patrons. Additionally, one wheelchair-accessible unisex toilet will be available. Each toilet will be equipped with a handwash basin.

Regular maintenance and cleaning will be carried out by dedicated event staff on a scheduled roster to ensure high hygiene standards at all times. The bathroom facilities will be installed during the site build phase and available for use by site staff and contractors during this period. They will be among the last pieces of infrastructure to be removed during the “bump-out” phase.

#### **3.2.4 Suitable Vehicular Access**

Upon entering the property from the Snowy Mountains Highway, all vehicles will use a dedicated internal road suitable for all vehicle types, pass through the ticketing area, and proceed to the designated parking areas.

This will be a two-lane road leading to the event space to ensure emergency access when required. Beyond the car park, into the entertainment area, the road will be used exclusively by staff, suppliers, and emergency service vehicles.

### **3.3 Pollution**

#### **3.3.1 Noise pollution**

Full details of the noise management procedures in place for the event are provided in the Soma Acoustic Report (*Soma 2025c*).

#### **3.3.2 Greenhouse Gas (GHG) emissions**

Soma is currently conducting a GHG emissions footprint assessment to estimate emissions and develop comprehensive reduction strategies for Scope 1, 2, and 3 emission sources. Based on industry research and an initial high-level emissions estimate, we have identified travel as the largest emission source and have outlined several initiatives to reduce other Scope 1, 2, and 3 emissions. Our primary focus is to avoid emissions where possible, followed by a commitment to offset



any unavoidable remaining GHG emissions. Confirmed reduction measures include:

- Prioritising artists from the ACT, NSW, and Victoria to minimise the need for interstate or international flights.
- Providing a bus service (subject to demand) from Sydney and Melbourne to reduce emissions from car travel, along with implementing a paid car pass system to discourage driving and promote more sustainable alternatives such as buses or carpooling.
- Prioritising local suppliers to reduce emissions from supplier transportation.
- Offering a predominantly vegetarian and vegan menu to lower emissions associated with meat production.
- Implementing a comprehensive waste management plan to minimise waste-related emissions through recycling and composting, while enforcing a single-use plastic ban.
- Adding a carbon offset contribution to attendee tickets and offsetting any remaining event emissions to achieve net-zero emissions.

### 3.3.3 Light pollution

The nature of the event places a strong emphasis on lighting and illumination. The diverse range of lighting displays creates a unique and interactive experience for attendees.

However, the type of lighting used can impact the night sky. By implementing specific measures, we will significantly reduce the effect of lighting displays on the surrounding sky and environment. These measures include:

- Where possible, lights will be directed downward rather than upward. This includes avoiding the use of sky scanner spotlights and ensuring lighting towers are positioned below the horizontal or at a downwards angle.
- Prominent lighting displays will be concentrated around the event stage, and nearby trees, reducing sky exposure by avoiding placement in open spaces.
- Lights will be used only when necessary, ensuring they remain turned off outside of required hours.

- Where feasible, warm white lights will be used instead of cool white lights, to minimise pollution, as they emit lower levels of blue light.
- Festoons will be used for certain runs of pathway lighting instead of day makers, further reducing sky exposure.
- Stage lighting and installations will follow a model that modifies frequency using dimmers and related effects, to reduce the consistency and intensity of displayed lights.

### 3.4 Natural Environment

#### 3.4.1 Riparian Land and Watercourses

The subject land is classified as riparian land and is subject to the provisions of the LEP (*Tumut LEP 2012, clause 6.5*), as shown in [Figure 3-1](#).

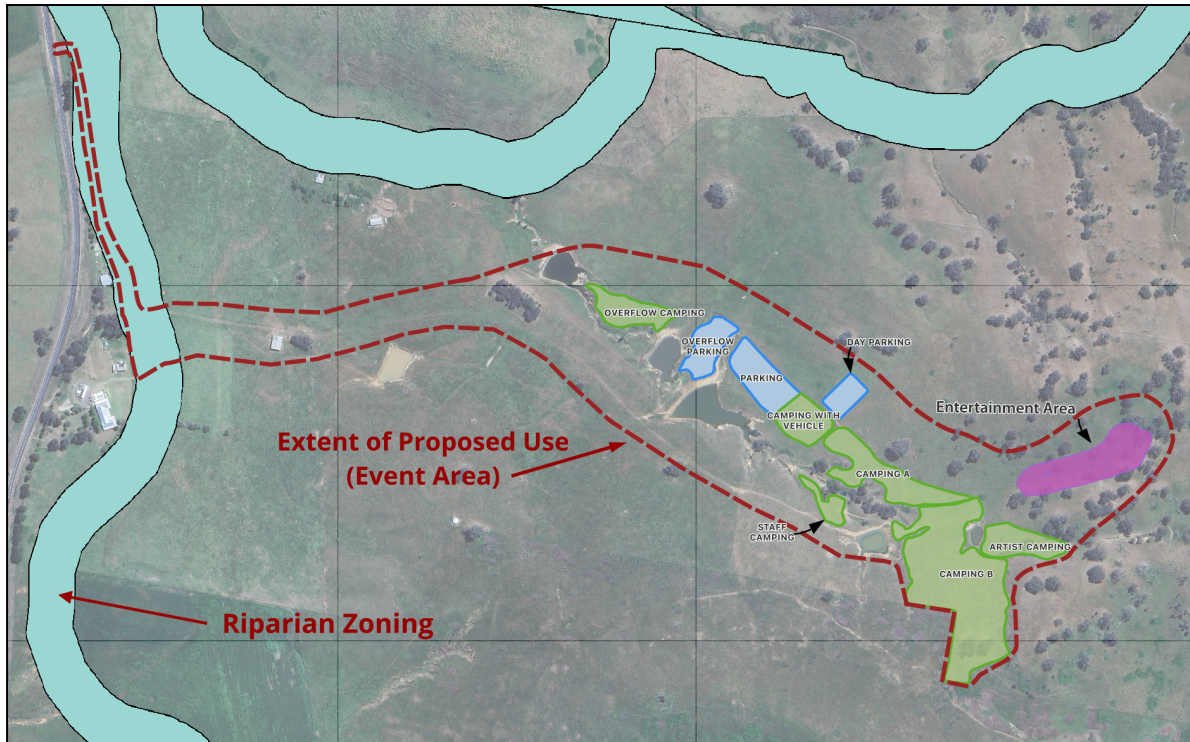
Nacki Nacki Creek flows through the property but will be separated from the main event activities. The stage, camping, and parking areas are located 800 meters to 1 kilometer away from the river, outside the riparian zone. No new structures will be erected, and there will be no significant disturbance within the riparian zone. As a result, there will be no adverse impact on fish or other aquatic organisms, nor any obstruction to their movement along the waterway.

If necessary, further rope fencing will be implemented to discourage event attendees from being located within the riparian environment.

Given the extent and nature of the proposed use, the riparian environment will not be adversely affected, and there will be no impact on water quality. There are no plans to extract water from the river, as all necessary potable water will be brought to the site and made available through potable water stations in the entertainment and camping areas.

Potential contaminants, such as fuel and chemicals, will be securely stored in vessels and tanks well away from public access. These materials will also be kept outside the riparian zone, away from the river. Only essential materials required for event operations will be stored on-site and will be removed once the event concludes.

Figure 3-1 Overlay of riparian lands and watercourses (NSWDPHI 2018a), as outlined in Tumut LEP 2012, of the proposed event area and surrounds



### 3.4.2 Excavation and Fill

Minimal excavation will be required. There will be 8 holes with a diameter of 150mm dug at the depth of 1200mm that will be used for the erection of poles.

These poles will be situated around the main stage area, to suspend lighting. An auger will be used to create these holes.

To provide site lighting alongside one of the walkways, there will be 15 small holes with a diameter of 80mm dug at the depth of 500mm, these will be used for small poles.

Upon completion of the event all poles will be removed and the holes will be filled to restore the land back to its original condition.

### 3.4.3 Flood Planning

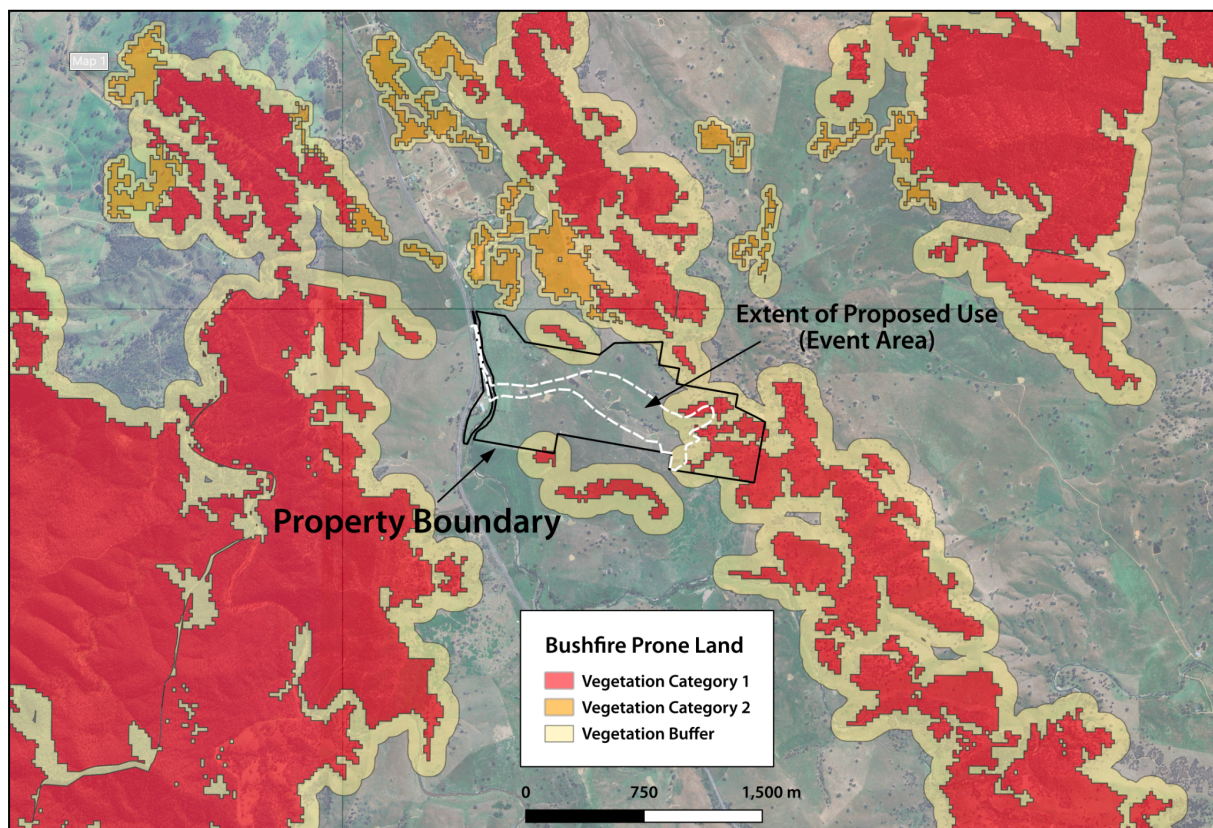
The subject land is not identified as a flood planning area, according to government data (NSWDPHI 2018b). As such, planning in accordance with the LEP (Tumut LEP 2012, clause 5.21) is not applicable.



### 3.4.4 Bushfire Planning

The proposed land to be used for the event partially overlaps areas identified as bushfire prone land, as shown in [Figure 3-2](#). This overlap falls under vegetation category 1 and its buffer zone, as defined by NSWRFs (NSWRFs 2019). The event coincides with the beginning of the bushfire danger period. Considering this, various ongoing measures focusing on mitigation, awareness, preparedness, and response will need to be implemented throughout the staging of the event.

Figure 3-2 Bushfire Prone Land Map (NSWRFs 2025) of the proposed event area and surrounds



A variety of fire prevention and management procedures are in place to mitigate the risk of bushfire. There will be a range of ongoing mitigation, awareness, preparedness and response actions to be implemented continuously during the event staging period.

Further information can be found in the Soma BMP (*Soma 2025d*).

### 3.4.5 Terrestrial biodiversity

The majority of the subject land where event operations will be conducted is outside of biosensitive areas. However, there are pockets of biosensitive areas within this land and the surrounding areas, as shown in [Figure 3-3](#). As such, the proposed land is subject to the provisions of the LEP (*Tumut LEP 2012, clause 6.3*).

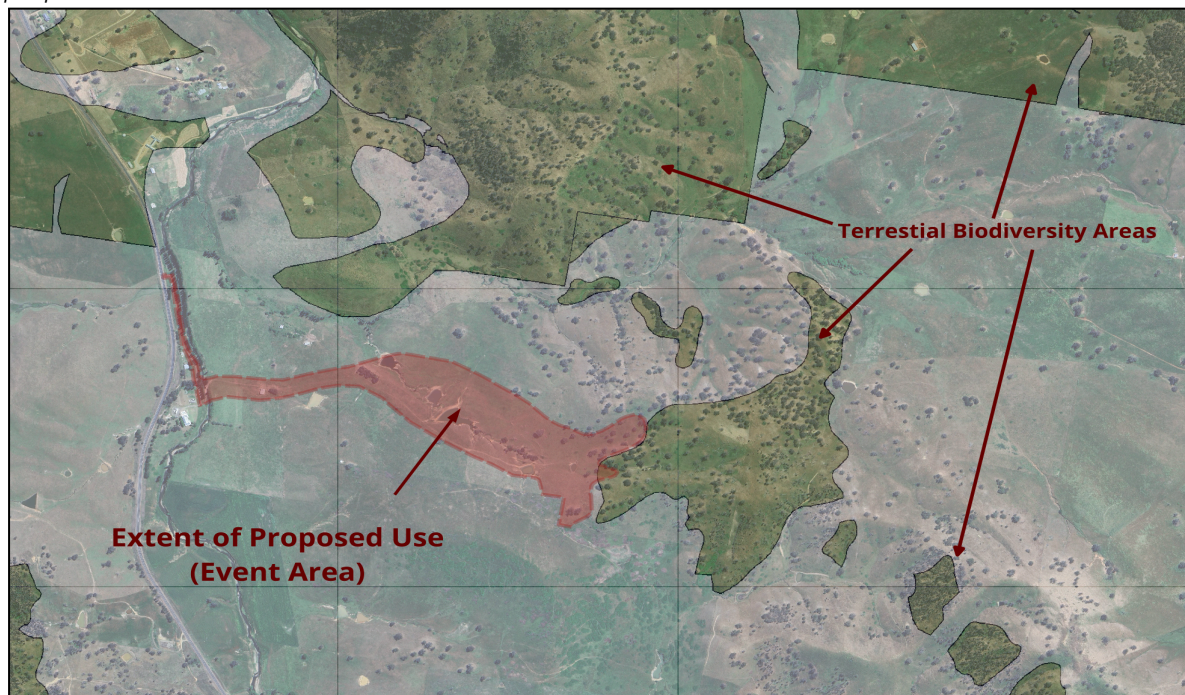
No identified impacts would affect the importance of the vegetation or disturb the habitat and survival of native fauna and flora.

A minor impact has been identified regarding the condition and ecological structure of the biodiversity-sensitive land. However, most event activities, including car and foot traffic, will occur outside these areas.

There would be no tree removal, however there is a proposal to remove dead wood for fire safety purposes and falling branches.

It is considered that as the event is only for three days, it is expected that the biodiversity values would easily recover from the temporary use of the land.

*Figure 3-3 Overlay of terrestrial biodiversity (NSWDPHI 2018c), as outlined in Tumut LEP 2012, of the proposed event area and surrounds*

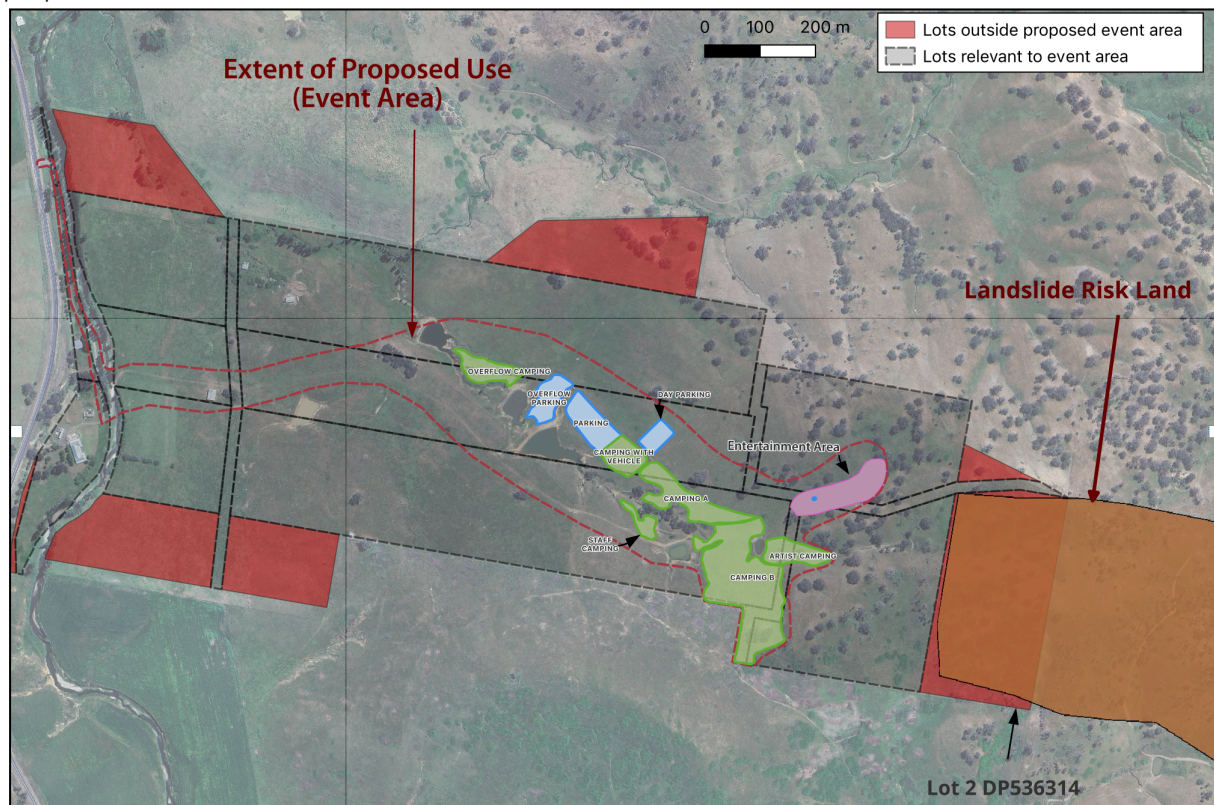




### 3.4.6 Landslide Risk

[Figure 3-4](#) shows that Lot 2 DP536314 contains land that is at risk of landslide. However, this lot is not part of the proposed event area, and as such, it is not included in the DA. Therefore, the planning requirements under the LEP (*TumutLEP 2012, clause 6.8*) are not applicable.

Figure 3-4 Overlay of landslide risk land (NSWDPHI 2018d), as outlined in Tumut LEP 2012, of the proposed event area and surrounds



### 3.5 Construction Issues

All structures erected for the event will be temporary, and the land will be restored to its existing condition upon completion of the event. The temporary structures will be constructed and removed between 31st October 2025 and 13th November 2025.

All structures erected would be temporary and the land would be restored to its existing condition at the completion of the event. The temporary structures would be constructed and removed between the 31st October 2025 and 13th November 2025.

The temporary stage to be constructed satisfies the conditions outlined in state planning policies (*NSWSEPP 2008, subdivision 1 clause 2.108*) and is therefore exempt from a separate DA.

### 3.6 Waste Management Plan

The Waste Management Plan covers all waste management at the event which will be managed by Soma. Waste amount estimates are outlined in [Table 3-1](#).

Estimates are provided based on the amount of people attending the event using data from similar sized events.

*Table 3-1 Waste estimates*

Type of waste	Estimated amount	Storage	Where it will be disposed	Method of disposal
<b>Vegetation</b>	Minimal amount from dead branches	Land Owner's Property	Used for firewood	N/A
<b>Landfill</b>	1.5 - 2 tonnes	9 cubic metre skip	Collected and processed offsite	Transported off-site via truck
<b>Recycling</b>	0.8 - 1 tonne	850mm x 850mm bulker bags	Collected and processed offsite at a recycling processing facility	Transported off-site via truck
<b>Compost</b>	0.5 tonnes	2 cubic metre skip bin	Collected and processed offsite	Transported off-site via truck

The event waste management plan will aim to:

- Minimise contamination of waste streams and maximise the diversion of waste from landfill
- Ensure the site is clean during and after the event
- Protect public health and safety
- Enhance the reputation of the event and generate goodwill among the public
- Comply with Council requirements and relevant legislative requirements

### 3.6.1 Waste Management Infrastructure and System

There will be a number of different types of bins which will be labelled to indicate the different streams of waste as outlined in [Table 3-2](#). These bins will be situated in areas with high foot traffic with focus on the entertainment area and food precinct.

A waste management team will ensure bin change overs are conducted at regular intervals using spare bins kept at the site waste station to ensure bins do not overflow. This team will work with event volunteers to sweep both event entertainment areas and campgrounds at regular intervals to ensure the site is free from waste. All waste on the event site is collected as quickly as possible to minimise any damage to the local ecology.

A central waste station with skips easily accessible for access by truck will be set up on-site. This station is set-up away from public areas and patrons. Once full bins are returned to the waste station the waste management team will sort through all waste by hand into three main streams: organics, recycling and waste to landfill.

Skip bins will hold the waste after it is sorted and at the end of the event, or when full, skip bins will be taken to an external waste management facility and replaced with empty skips when required.

Table 3-2 The main waste streams that will be implemented throughout the event

Compost	Recycling	Landfill
<ul style="list-style-type: none"> <li>- Food Waste</li> <li>- Food-contaminated paper products</li> <li>- Compostable service ware such as containers, cutlery etc.</li> <li>- Anything of plant or animal origin (eg. bamboo, cotton, wool)</li> </ul>	<ul style="list-style-type: none"> <li>- PET plastic bottles and cups</li> <li>- HDPE plastic bottles</li> <li>- Other recyclable plastics</li> <li>- Milk cartons and tetra-paks</li> <li>- Aluminium cans</li> <li>- Cardboard</li> <li>- Glass (Prohibited item, but if found on site)</li> </ul>	<ul style="list-style-type: none"> <li>- Polystyrene</li> <li>- Plastic bags, cling wrap and plastic packaging</li> <li>- Cable ties</li> <li>- Waxed cardboard boxes</li> <li>- Fabric like nylon</li> <li>- Tents, camping equipment and gumboots</li> </ul>

### 3.6.2 Waste Minimisation Strategies

The following strategies will be implemented to minimise the contamination of waste streams and maximise the diversion of waste from landfill.

Table 3-3 Waste minimisation strategies

Item	Strategy
Marketing	Positive messaging will go out through social media and event messaging channels prior to the commencement to the event. This will encourage patrons to be aware of sustainability practices and waste streams.
Food Vendor Waste	Vendor contracts will include clauses to ensure they are responsible for removal of all their own waste and only use compostable products.
Briefing for all volunteers and staff	All staff and volunteers will be briefed prior to the event to ensure everyone is aware of their responsibilities with regards to waste and understanding of how the waste systems operate.
Cigarette & vape recycling	Cigarette and vape recycling bins will be clearly labelled so that people

	have a place to put their butts rather than disposing them on the ground.
Glass	Soma will have a no glass policy - patrons will be checked upon entry into the event. This will minimise glass waste.
Straws	Plastic straws are not permitted and all food vendors will be notified of this prior to the event.
Water refill stations	Water refill stations are available throughout the site to keep patrons and crew hydrated and encourage container refilling rather than purchasing bottled water from vendors. Soma will have reusable water bottles for purchase during the event.
Cytotoxic medical waste	The medical team are responsible for ensuring all cytotoxic medical waste is taken with them off site and correctly disposed of.

## 4. CONCLUSION

This SEE has been prepared to support a DA seeking Council's consideration for the proposed temporary use of land at 3892 Snowy Mountains Highway, Mount Adrah, NSW 2729.

The SEE demonstrates that the proposed event would be supported by satisfactory arrangements for traffic, waste, essential services and environmental concerns.